

Lady Ellen



GENERAL DATA

Type of ship:	Three-masted top gallant schooner
Length overall:	50 meters
Length on deck:	38,9 meters
Beam:	7,8 meters
Draught:	3,9 meters
Mast Height:	30 meters
Number of sails:	13
Sail Area:	approx 800 sq. m
Tonnage (GRT):	400
Displacement:	206
Day guests:	90 + 15 crew members
Cabins:	8 for 27 guests and 9 for crew members
Cruising speed engine:	8 knots
Cruising speed sailing:	0-12 knots.
Range:	approx 70 000 nautical miles under power.
Built Year:	1981-1982
Flag:	Swedish
Call sign:	SECL
Class society:	DNV-GL
Constructor:	Tradewind
Certificate:	Passenger Certificate E 100 passengers, D 59 passengers, C 29 passengers. As a cargo ship used in area A.
Radio certificate:	International A1 Radio Certificate
Located:	Tjörn, Sweden
Hull material:	Steel

TANKAGE

Fuel:	75 tons
Drytank:	1 ton
Water:	38 tons
Grey water:	200 liters
Black water:	5,5 tons

GENERATORS & MACHINERY

Main Engine:	Scania 550 hp
Bow Thrust:	Volvo-Penta D9, Hundested STF 250 hp
Generators:	2 x Iveco 45 kW, 1 x Iveco 26 kW
Electricity:	400 volt and 240 volt, 50 Hz, 20v, 12v.
Shore Power:	400 volt and 3x240

RIG & SAILS

- * 13 sails - approx 800 sq.m - (Henrik Ottosson Sails, Kungälv, Sweden)
- * Three masts in Oregon Pine - all renovated the past couple of years
- * All standing rigging has been exchanged, 1.100 meter wire.
- * Booms, galls, raws and mizzen-top and main-top is in our works hop every year/every second year/every third year for inspection and maintenance.
- * We have a rigging book where we have listed major rigging works - and you are welcome to take a look when you visit us.
- * The rig has been approved by Swedish Maritime Administration.

DECK EQUIPMENT

- * Teak deck.
- * Winter cover.
- * Beautiful deck houses covered in teak.
- * Sun/rain cover front deck from bar to bow-spirit.
- * Sun/rain cover over pop deck.
- * Six removable mahogany deck benches - provide large deck storage.
- * Two teak deck benches - provide deck storage.

OTHER MACHINERY

- * Separate air conditions in renovated cabins
 - * WC-System and showers, Ordinary "as home" toilet system on board.
- Toilets and pipes exchanged during renovations. Works without any problems.
- 1 WC/shower (tiled) close to bar, on deck level
 - 5 WC/shower (tiled) in cabins
 - 2 WC/shower in cabins
 - 2 tiled shower rooms
 - 1 tiled bathroom
 - 1 bathroom
 - * Washing machine and Tumble dryer
 - * Anchorage, LIDANS 1980
 - * New engine to anchorage, SEW kW 5,5
 - * Boiler, 35kW

ELECTRONICS

- * Lady Elen has an international A1 Radio Certificate issued by Swedish Maritime Administration.
- * Furuno-GPS
- * Emergency VHF Sailor SP3110
- * DSC Encoder & Receiver RM 2042
- * NAVTEX NT900
- * Cospas-Sarsat MCM406A
- * Radar Transponder TRONART R1210 XX Raster Scan
- * Furuno Radar
- * Furuno/Maxsea Electronic Chart Program

SAFETY EQUIPMENT

Fully compliant according to Swedish Maritime Administration for commercial vessels.

- * EPIRB - McMurdo
- * Safety Rafts - Solas approved VIKING, 5x25
- * MOB-Boat/Rescue Boat
- * Life jackets - 122 pieces adults
- * Life jackets - 10 pieces children
- * Survival suit - 6 hours - 5 pieces
- * Survival suit - 1 hour - 28 pieces
- * Complete intercom system
- * Batteries - back up system for navigation, safety equipment and lights

- * Distress signals, ships pharmacy, first aid kits, life boys, etc.
- * All according to Swedish Maritime Administration.

SAFETY EQUIPMENT - FIRE

- * Ultra Fog water fog sprinkler system.
- * Fire alarm system.
- * Fire pump - 21 m³/hour.
- * Fire extinguishers in vessel as demanded.
- * Inergen fire extinguishing in machine room.
- * Fire fighting equipment - 2 complete.
- * Bilge pump - 12 m³/hour.

GALLEY EQUIPMENT

The galley is a fully equipped restaurant kitchen.

Serving a warm three course meal to 90 guests is no problem.

The ovens are big. The dish washing machine takes 2 minutes.

Range: Metos Futura 800*800 restaurant series adapted to sailing vessel

Heat pan: CC 522 mm

Oven x 2: Metos Chef 24 size mm 800*800*520

Fridge x 2: Metos C700 - 700 liters

Fridge: Electrolux - 500 liters

Fridge: Metos - vegetable fridge 200 liters

Freezer: Metos - 350 liters

Freezer: Haglund - 5-700 liters

Microwave: Electrolux

Stainless steel surface and sinks. One separate sink for vegetables and one for washing hands.



THE BAR

The rounded mahogany bar is a masterpiece. Benches and sinks in stainless steel. Great sound in the bar. If you want you can play music from the bar out on deck, down to the saloon and even the guests cabins. The bar has capacity of serving 150 cold pints of draft beer per hour. In connection to the bar there is a storage room where eleven 30 liter FAT can be stored - and approx. 1.000 beverages. In the bar you have a fridge (capacity e.g. 192 cans (33 cl) and 80 bottles of wine), ice machine and a fully tiled bathroom.



THE SALOON

A flexible multi-purpose saloon. Can easily be transformed from a dining area for up to 45 guest to conference room for 27.

THE CABINS

FÄRRE NOSTER

- * One double bed and one flexible singlebed
- * One sofa that can be used as bed
- * High quality mattresses
- * Made in cherry-wood
- * One bathroom with WC/shower
- * Air-condition
- * Large closets

HÄGESKÄD

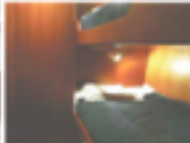
- * One double bed
- * High quality mattresses
- * Made in mahogany
- * One bathroom with WC/shower
- * Air-condition

NBINGEN & VINGÅ

- * Teak-floor
- * One double bed & one flexible single bed
- * High quality mattresses
- * Made in cherry-wood
- * One tiled bathroom with WC/shower
- * Air-condition
- * Good storage space

HÄLLO

- * Teak-floor
- * Two single beds
- * High quality mattress
- * Made in cherry-wood
- * One tiled bathroom with WC/shower
- * Air-condition



SKANSEN

- * Six single beds
- * Made in mahogany
- * One bathroom
- * One tiled shower room
- * Large closets

MÅSEN

- * 4 single beds
- * Made in mahogany
- * One bathroom (shared with Skansen)
- * One tiled shower room (shared with Skansen)

CREW CABIN

Teak-floor

- Two double beds and two single beds
- High quality mattresses
- Made in mahogany
- One sofa and table
- One tiled shower room
- One tiled bathroom
- Lot of cupboards for storage

CAPTAIN'S CABIN

* Teak-floor

- * One double bed and one extra bed
- * High quality mattresses
- * Made in mahogany
- * One sofa and table
- * One tiled bathroom with WC/shower

CHEF'S CABIN

* Teak-floor

- * One double bed and one single
- * High quality mattresses
- * Made in cherry-rose
- * One tiled bathroom with WC/shower
- * Air-condition

